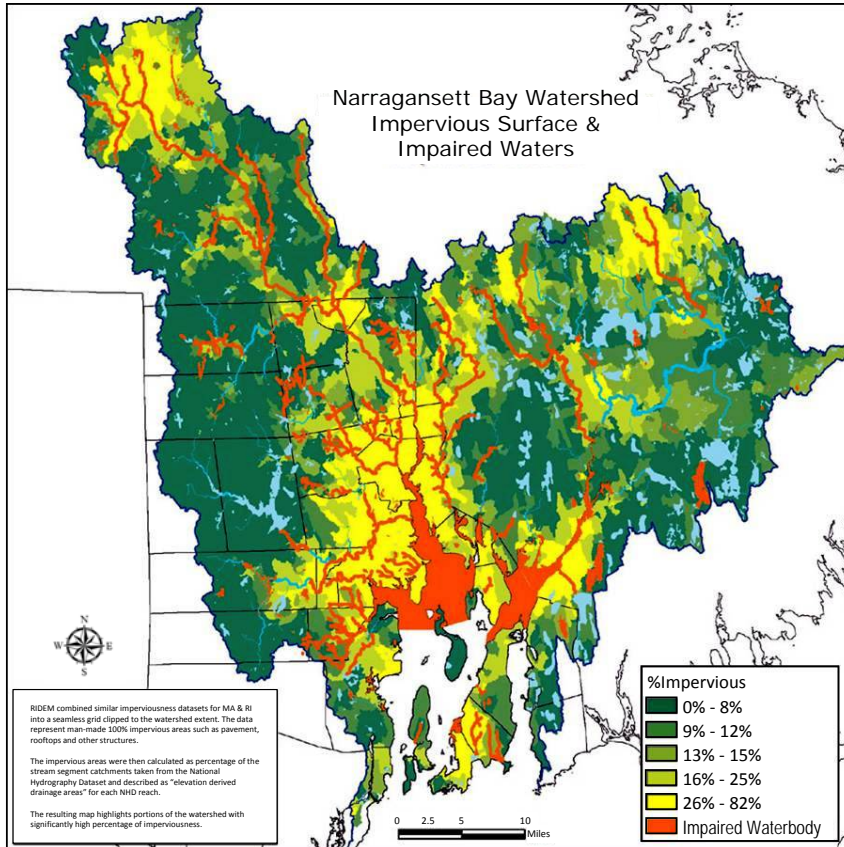




# Impervious Cover



Impervious cover (IC) is hard surfaces such as roads, driveways and roofs. Rain falling on IC runs off into rivers, ponds and the Bay, carrying pollutants, warming rivers, closing beaches and worsening flooding.



In the Narragansett Bay Region, impaired streams are found in areas with high impervious cover.



Woonasquatucket River at Dean St.

When IC is over 25%, streams are severely impacted

The average IC in the Narragansett Bay watershed is 14%.



URI Watershed Hydrology Lab



URI Watershed Hydrology Lab



URI Watershed Hydrology Lab

Areas with low impervious cover (< 10%) have streams that can support a wide array of plants, macroinvertebrates, and fish.