



# Beach Closures

**NARRAGANSETT BAY  
WATERSHED  
COUNTS**  
ECONOMY • ENVIRONMENT • EQUITY



Beaches are an important component of the Rhode Island economy.

The number of beach closures has decreased by 36% since 2006.



RI Department of Health

Beach closures are linked to rainfall.

When it rains, stormwater can carry contaminants, such as bacteria, to beaches, forcing beach closures.

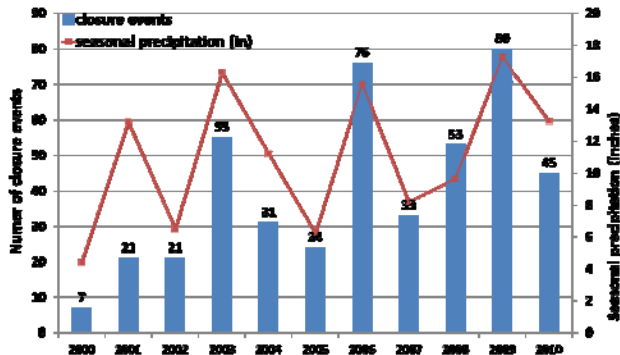


RI Department of Health



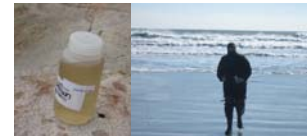
RI Department of Health

Seasonal saltwater beach closure events & Seasonal precipitation (2000 – 2010)



Data: RI Department of Health, Beach Monitoring Program

Good management and improved infrastructure can lead to fewer beach closures.



Testing water for bacteria

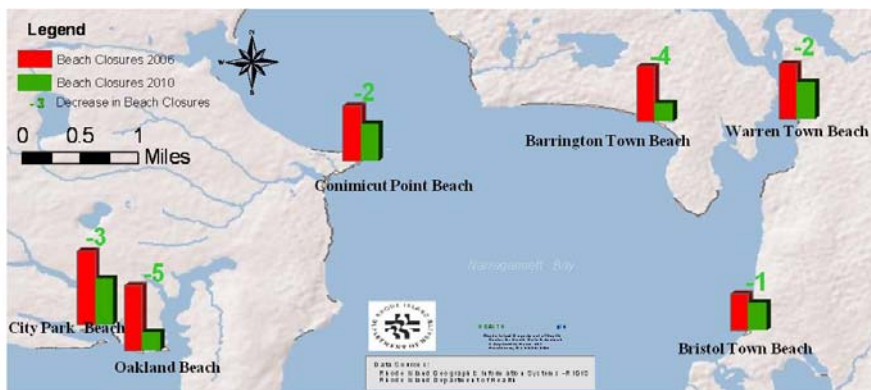
RI Dept. of Health



Narragansett Bay Commission's Combined Sewer Overflow (CSO) Project

Jacobs Associates

Upper Narragansett Bay Beach Improvements 2006-2010



Warren Town Beach

kidinfo.com