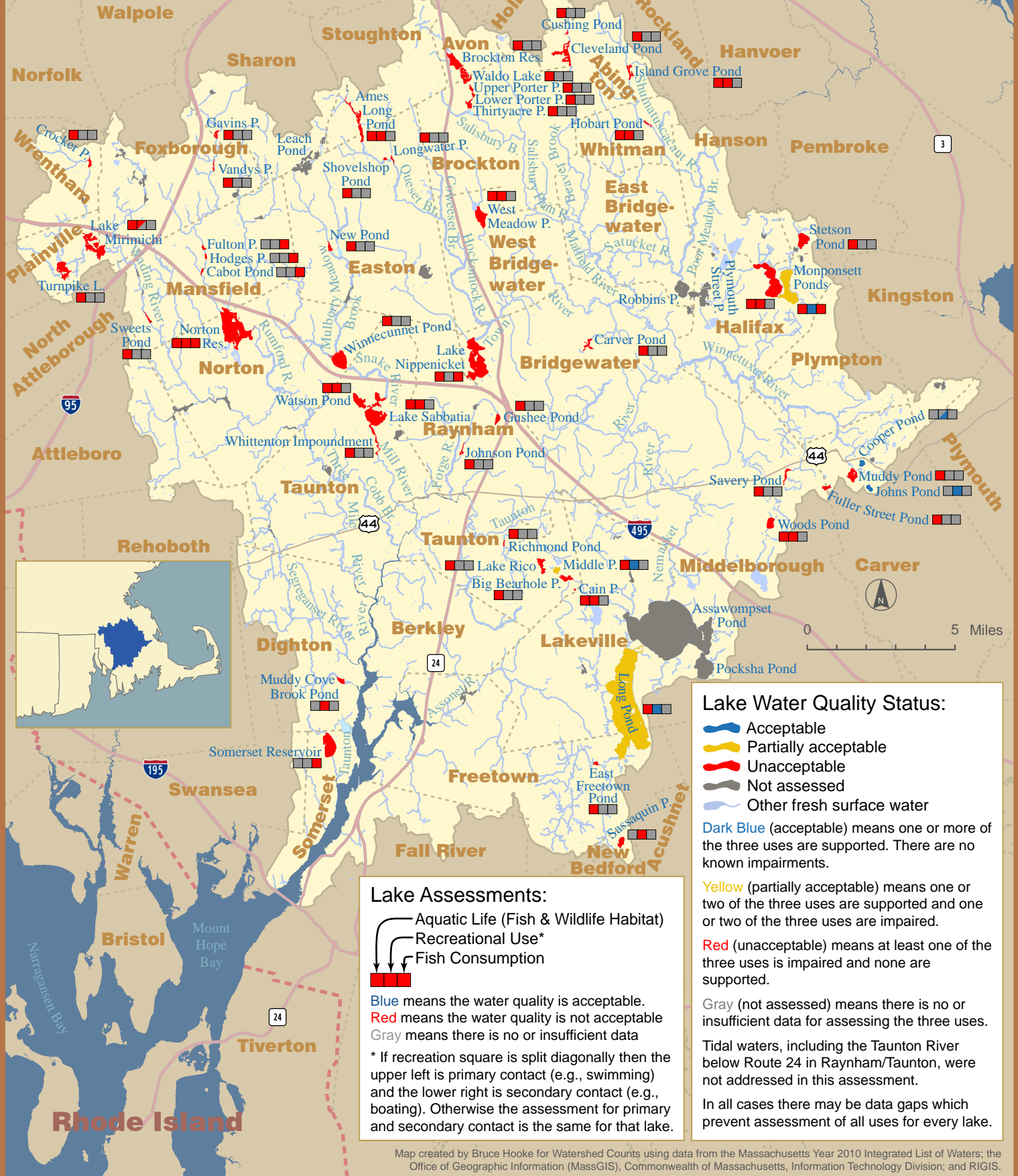


# Taunton River Watershed Lake Water Quality Status

Based on the 2010 assessment by MA DEP for aquatic life, recreation, and fish consumption



**Lake Water Quality Status:**

- █ Acceptable
- █ Partially acceptable
- █ Unacceptable
- █ Not assessed
- █ Other fresh surface water

Dark Blue (acceptable) means one or more of the three uses are supported. There are no known impairments.

Yellow (partially acceptable) means one or two of the three uses are supported and one or two of the three uses are impaired.

Red (unacceptable) means at least one of the three uses is impaired and none are supported.

Gray (not assessed) means there is no or insufficient data for assessing the three uses.

Tidal waters, including the Taunton River below Route 24 in Raynham/Taunton, were not addressed in this assessment.

In all cases there may be data gaps which prevent assessment of all uses for every lake.

**Lake Assessments:**

- Aquatic Life (Fish & Wildlife Habitat)
- Recreational Use\*
- Fish Consumption

Blue means the water quality is acceptable.  
 Red means the water quality is not acceptable  
 Gray means there is no or insufficient data

\* If recreation square is split diagonally then the upper left is primary contact (e.g., swimming) and the lower right is secondary contact (e.g., boating). Otherwise the assessment for primary and secondary contact is the same for that lake.